



## A One-Stop Solution to Optimising Cloud Storage

Cloud Storage is the successor to traditional Network-Attached Storage (NAS) enabling secure and scalable file storage and better mobility, but there remain challenges to be addressed.



### Common Challenges of Transitioning to Cloud Storage

- > Compatibility issues with legacy systems
- > High cost of data migration from NAS to Cloud
- > Slower access speed

## How GigaCentral Works?



### Automatic Sync & Backup

Ensures all data is backed up in real-time to another site. When one site goes down, another site is immediately ready.



### Cloud Storage Gateway

Acts as a central management console that exposes SMB/NFS connections to bridge to multiple Cloud Object Storages (e.g. AWS & IBM ICOS).



### Software-Defined Tiering to Cloud

Caches data locally onto high-performance storage. Remaining data is automatically tiered to Cloud Object Storage.

### Benefits

- > Reduces costly disruptions to business operations due to disasters that occur with low RPO/RTO

### Benefits

- > Eliminates costly data migration to cloud storages by integrating with legacy systems using SMB, NFS protocols

### Benefits

- > Reduces storage cost and effort by optimising storage usage automatically

## GigaCentral helps XBM in secure migration of their data.

XBM is an established leader in engineering, has acquired a large volume of files and high-resolution images, drawings and blueprints stored legacy storages since its inception in the 1990s. However, as the business grew in volume and required better scalability, XBM began to encounter issues.



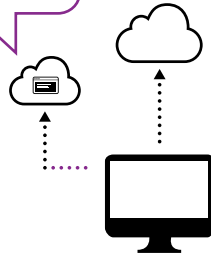
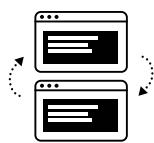
Their On-premise storage had high maintenance cost and took physical space which made it difficult to scale and resulted in high RPO (Recovery Point Objective) and RTO (Recovery Time Objective)

Migrating to cloud storage would involve high migration cost, a slower performance due to the transferring of large files that will choke up the bandwidth.

Challenges

Solution

Provided SMB and NFS interfaces for XBM to connect their files seamlessly



Removed duplicates and compressed data to reduce bandwidth usage



Significantly lowered RPO and RTO to minimise data loss and disruption to day-to-day business operations by performing real-time sync and snapshot backup

Addressed concerns of slow performance with Tiered Storage

